

DECEMBER NEWS

from **NIELSEN'S MARINE MATES**

45 – 47 Beenleigh Redland Bay Road, Loganholme. 4129

www.nielsensmarinemates.com.au Ph 3801 4222



CHRISTMAS/NEW YEAR TRADING

*This year we will be **CLOSED** on:*

**CHRISTMAS DAY (THURSDAY)
BOXING DAY (FRIDAY)
NEW YEAR'S DAY (THURSDAY)**

but will trade as normal on all other days from 9.00 a.m. to 5.00 p.m.

A big thank you to all of our customers for your continued support this year and we hope to see you all back next year for all your fishkeeping needs.

We wish you all the very best for the festive season and the New Year and hope Santa brings you something fishy. Cheers from Ian, Carl, Benny, Brent, Ben and the Nielsen family.

MARINE FISH OF THE MONTH PYJAMA CARDINALS



Pyjama Cardinals are a highly unusual looking fish with big red eyes, large spots and strange finnage. They are a very interesting addition to any marine tank, a

peaceful community fish and reef safe. When resting, they will sit perfectly still mid water without moving a fin and look like they are suspended by some invisible means. Fish which have very large eyes are often nocturnal and Pyjama Cardinals, and in fact all Cardinal Fish, are no exception. Nocturnal

fish usually rest in the day time and feed at night. However pyjama cardinals adapt well to day time feeding although they do prefer feeding in the late afternoon/evening. They look most spectacular in a small group and so are one of the few marine aquarium fish which can be kept in a school.

Normally \$19.00 each

DECEMBER SPECIAL \$15.00

AND NOW FOR SOMETHING DIFFERENT – CORAL VIEWER



This device is designed to eliminate surface water disturbance from pumps etc and allow clear viewing and

photographing of corals, fish and any aquarium inhabitant. It also has a removable magnifying lens which allows closer and more detailed viewing.



The above photo of coral in our selling tanks shows the clarity and detail available when using the Coral Viewer even in aquariums with very strong flow.

Be sure to add this to your Christmas List! **ONLY \$21.99**



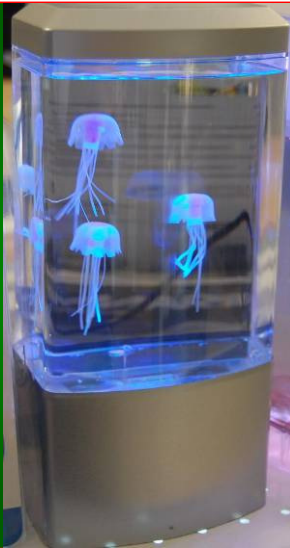


GIFT SUGGESTIONS



JELLYFISH LAMP

How cool are these? The perfect gift – even for non fish keepers! Lifelike jelly fish float around and are highlighted by the changing colours of the lamp. These desk top lamps measure 26cmH x 12.5cmW x 8.5cmD and are very relaxing to watch. See our facebook page for a video of one in action. Only \$39.99!



PERFECT GIFT FOR THE KIDS! Get them into fishkeeping!



MARINA GOLDFISH SETUPS THREE SIZES

Perfect starter tanks – plastic with coloured lid. Includes filter, water conditioner, bacteria starter, food. 6.7 lt, 33 x 27cm high \$64.50; 10 lt, 33 x 37cm high \$79.99; 21 lt, 43 x 47cm high \$99.99. Optional light to suit all models \$27.99. Pink, Blue and Purple colours but not all colours available in every size.



PET WORX SCENIC AQUARIUM

40LT tank with top filter and LED lighting. Ideal freshwater tank – add a heater for tropical. White or Black. \$119.00



DON'T FORGET WE HAVE GIFT VOUCHERS FOR ANY AMOUNT AVAILABLE WITH NO EXPIRY DATE!

Useful for any aquarist – AQUA ONE 5 IN ONE TOOL – Includes glass scraper with stainless steel blade, scrubbing pad for glass or acrylic, plant fork, gravel rake and fish net – all in one handy tool. Only \$19.99!



KINTONS EXTRA STRONG MAGNET CLEANERS

Just in is this range of magnet cleaners in four sizes. Rough side goes inside the tank, smooth side on the outside, magnet holds it all together through the glass. Just pull slooowly along to clean algae from the glass. Conveniently if dislodged from the glass they float for easy retrieval. Magnets are progressively stronger in larger sizes to accommodate thicker glass. Make your life easier! Small \$7.50 Medium \$14.50 Large \$19.50 Extra Large \$30.99.



OCEAN FREE MARINE NANO TANKS.

These tanks have been very popular as a second tank, reef tank, or, in the case of the smaller model, to keep a pair of clowns or even seahorses. They come supplied with filtration, lighting and skimmer (which can be removed if using the tank for freshwater. Ocean Free Nano Tanks are available in two sizes – 34lt \$215 and 63 lt \$345 and what a great Christmas gift these would be!

ON THE WISH LIST OF MANY AQUARISTS



Merry Christmas



GREAT NEW PRODUCT – AQUA ONE AQUAFILL

This is an automatic top up device which can be used on any aquarium but is especially useful to replenish salt water tanks with fresh water that is lost from evaporation.

The Aquafill consists of three (3) float switches and a 200lt/hr pump. The most usual installation method is via a sump although it is possible to use it directly in the aquarium. A reservoir of your choice (any plastic container can be used) is filled with fresh water and the pump is submersed in it. Two float switches are then positioned in the sump (or aquarium) – one controls the 'low' level, switching the pump on when necessary, the other controls the 'high' level, turning off the pump to prevent the sump from overflowing. The third remaining float switch is installed in the water reservoir and this prevents the pump burning out if the fresh water level runs low in the container.

The Aquafill is a useful addition to your aquarium hardware all the year round but is especially useful in the hot weather when evaporation is at its highest level. It also gives peace of mind when going away on holidays to know that your sump will be topped up automatically and a

larger reservoir

could be used at that time if necessary.

All in all, a very useful piece of equipment!

\$107.99.

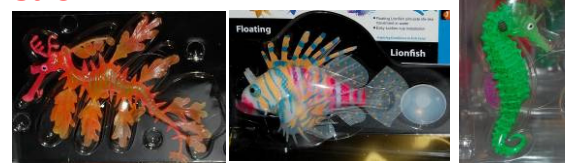


ADD SOME COLOUR TO YOUR AQUARIUM WITH FLOATING FLUORO ORNAMENTS



Just in are these new fluoro ornaments in four styles – just the thing to inject a bit of colour into your tank – kids love them, and lots

of adults as well! **All sell for \$9.99 each.**



OCELLARIS FILTER – WHEN A B-I-I-I-G FILTER IS NEEDED



The Ocellaris Filter is perfect for those large tanks – 6 to 8 feet, and where large fish such as cichlids, big natives and large goldfish are being kept. The filter has an impressive

3000lt/hr turnover and measures roughly 40cm square by 53cm high. It comes supplied with all filtration material to fill the large filter area and has a 9 Watt UV Sterilizer built in. All in all this is a great option for those with big waste producing fish.

\$425.00

RESIN HOLEY ROCK.

Artificial but realistic rock, won't affect ph of water and is lighter in weight. Great hiding places for fish. Six sizes priced from \$14.50 to \$54.99.





~~chosen. Normally \$4.50 each. NOW \$3 EACH OR 10 FOR \$25.00.~~

FRESHWATER FISH OF THE MONTH – ASSORTED PLATIES



Platies are a livebearing fish, meaning that they give birth to live babies, rather than laying eggs.

They are colourful, hardy and easy to keep and would really brighten up



your tropical tank for Christmas. Colours range from mostly reds and yellows, to blue and green and



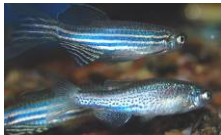
some have black finnage, spots and markings. Platies are happy to be fed on flake foods but an occasional feeding of frozen foods such as bloodworms or brine shrimp will be much appreciated.

Normally \$4.50

THIS MONTH \$3.50 EACH

SECOND FRESHWATER FISH OF THE MONTH – ASSORTED DANIOS

Preferring to swim in the mid-water to surface area of the tank, Danios look best when kept in schools and



are a very active fish. They will eat almost anything offered but will do best on quality flake food with an occasional



feeding of frozen, or even live, food. We have a good



assortment including Zebra, Gold Zebra and Leopard Danios. These fish are sold on an assorted basis and individual fish can not be

FRESHWATER PLANT OF THE MONTH – PINK BABY TEARS



Just what is needed for Christmas – a red and green plant! This pretty plant originates from South East Asia. It will tolerate a wide range of pH and hardness levels but does need good lighting to retain the pink to red

colouration of its leaves. Because of its bushy growth habits it is best to trim occasionally to allow light to penetrate to the lower leaves. It grows easily from cuttings but should be handled carefully as it is a soft stemmed plant, easily damaged with rough treatment.

Normally \$6.50

CHRISTMAS SPECIAL \$5.50.

DON'T FORGET YOUR HOLIDAY FEEDERS

Going away for Christmas? We have holiday feeders for every need.

Weekend Feeders – Slow release blocks which last 2 – 4 days.

7 Day Pyramid Feeders – these slow release blocks release small granules of food and on the third to fourth day a feeding of spirulina is also released from the 'secret chamber'.

10 Day Slow Release Feeders – these may, in fact, last 14 days as the rate of release is dependent on the alkalinity of the tank water. Why not try one in your tank prior to going away to gauge how long they will last?

Digital Battery Operated Feeders

The ultimate feeder – uses flake food or small pellets. Amount of food fed and number of feedings per day can be adjusted. Can last four

weeks or longer depending on
number of feeds per day.